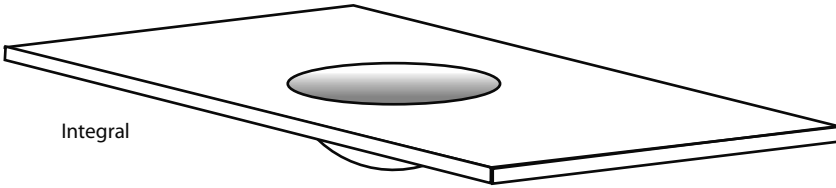


ROUND

Bath Basin



Integral

Two distinctly different sizes and styles. The depth of RO-1 makes it a very versatile sink. RO-2 lends itself to a more modern look with a shallow, minimal basin.

DESIGN OPTIONS

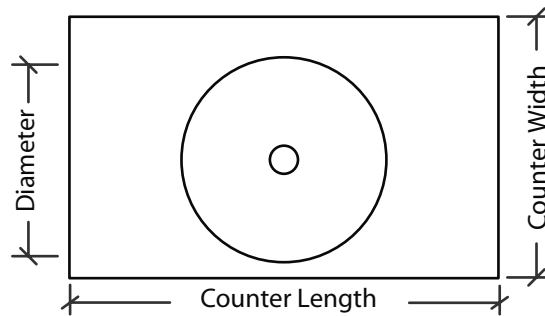
| | |
|---|-------------------------------------|
| X | Vessel (above counter) |
| X | Undermount (below counter) |
| X | Stand Alone / Floating |
| X | Integral - Standard Cabinet Install |

BASIN SIZE OPTIONS

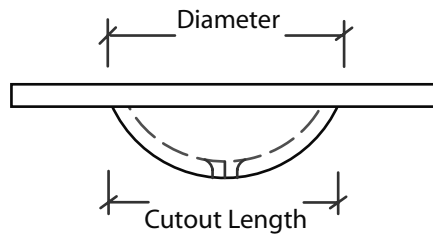
Dimensions are nominal within a tolerance of 1/8" +/-

| Model | Diameter | Depth | Drain | Counter Length | Counter Width | *Cutout Length | *Cutout Width |
|-------|----------|-------|-------|----------------|---------------|----------------|---------------|
| RO-1 | 14.25" | 6.5" | 1.75" | 19" Min | 20" Min | 17" | 17" |
| RO-2 | 12.5" | 3.5" | 1.75" | 17.5" Min | 18.5" Min | 15.5" | 15.5" |
| RO-3 | 12.5" | 6.5" | 1.75" | 17.5" Min | 18.5" Min | 15.5" | 15.5" 6 |

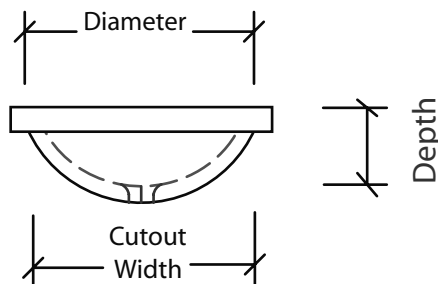
PLAN VIEW



FRONT VIEW



SIDE VIEW



*applicable to integral applications where sink falls below cabinet opening

DEX

www.dexstudios.com